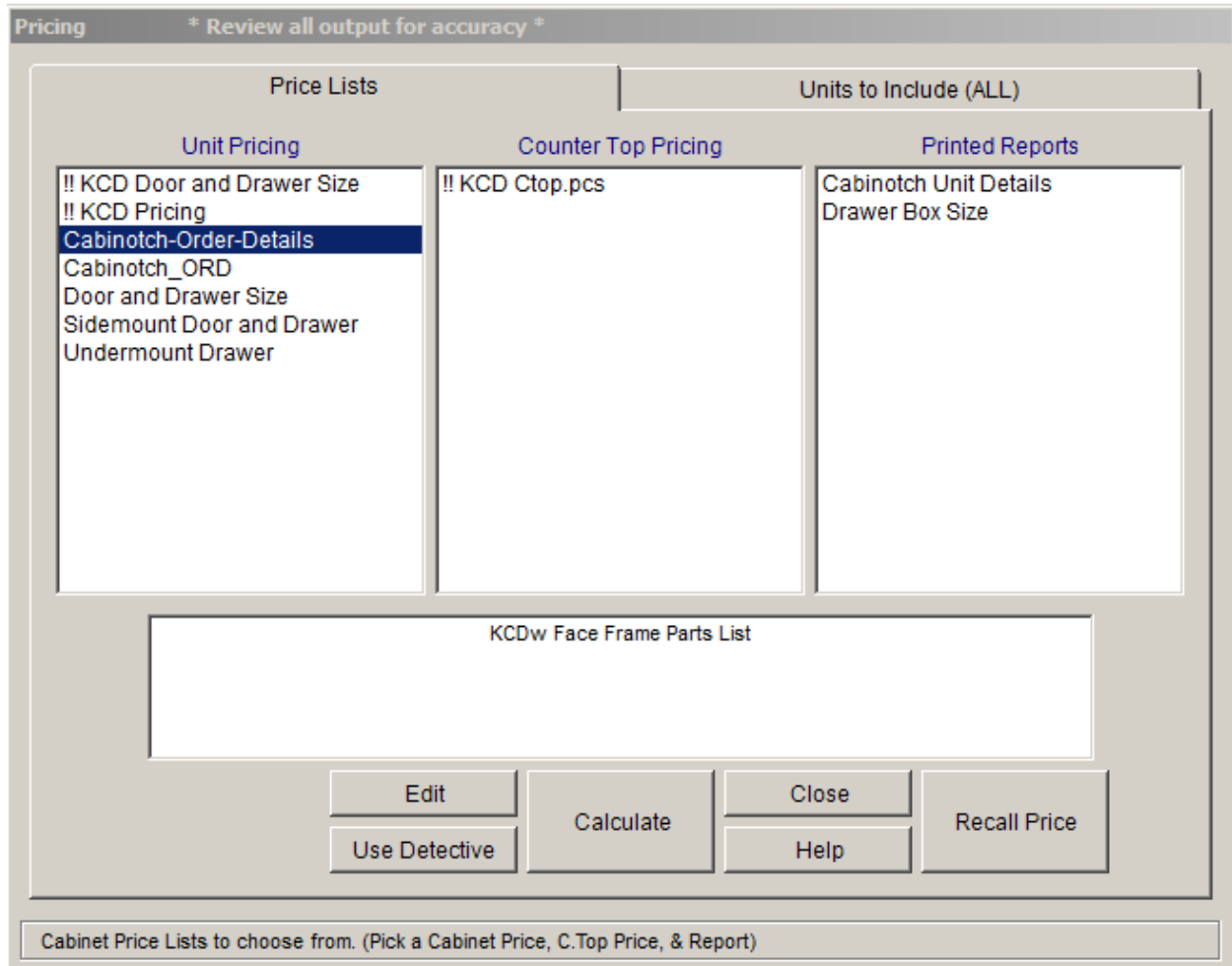


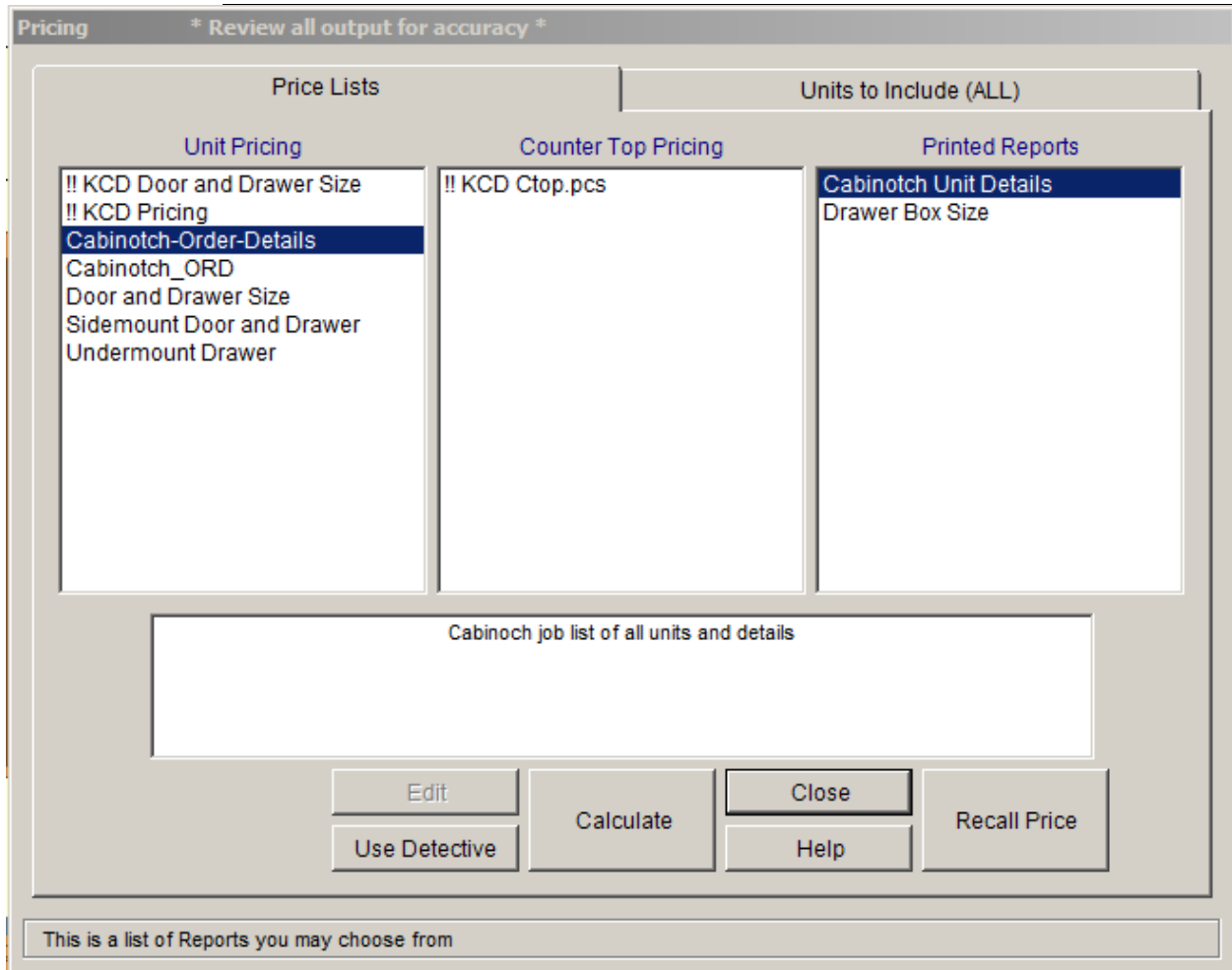
# Cabinotch Unit Details

We have added a new summary report called a Cabinotch Unit Details report. In order to run this report, you need the Pricer version or higher of the KCD software. To run the report, do the following:

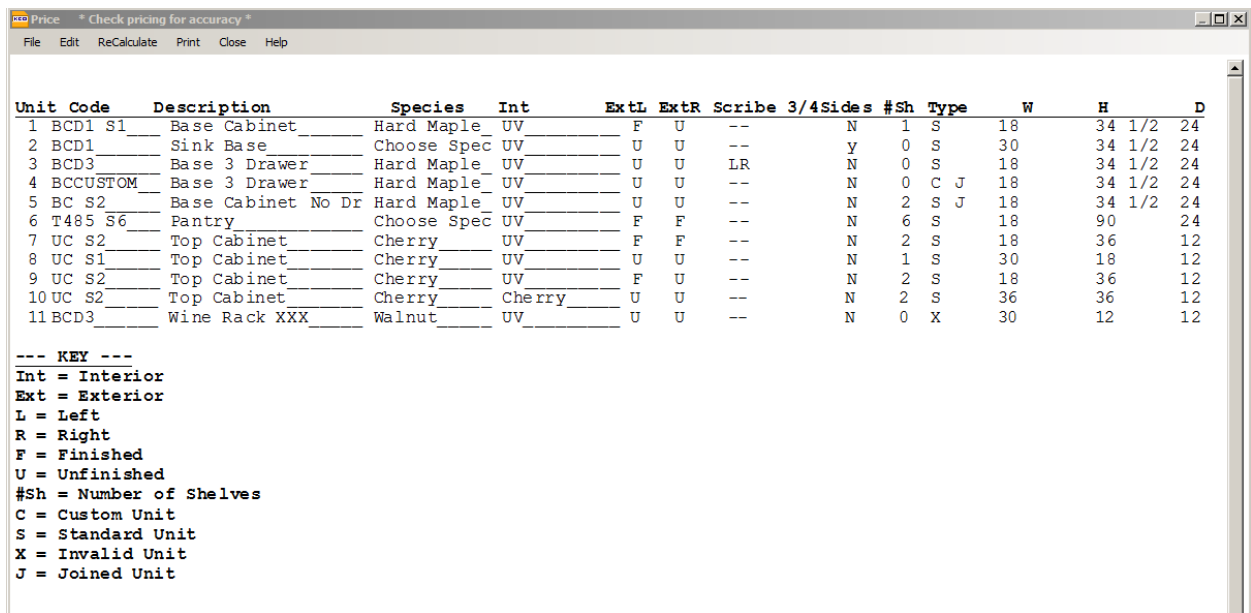
Go to the 'Price' selection on the tool bar and click. Select Cabinotch-Order-Details as shown below on the left hand side.



On the right hand side, select Cabinotch Unit Details as shown below.



Once these two items are selected; then click Calculate. The report will generate and look like report below.



The screenshot shows a window titled "Price" with a subtitle "\* Check pricing for accuracy \*". It displays a detailed pricing report with the following table:

| Unit Code  | Description        | Species     | Int    | ExtL | ExtR | Scribe | 3/4Sides | #Sh   | Type | W  | H   | D  |
|------------|--------------------|-------------|--------|------|------|--------|----------|-------|------|----|-----|----|
| 1 BCD1 S1  | Base Cabinet       | Hard Maple  | UV     | F    | U    | --     | N        | 1 S   | 18   | 34 | 1/2 | 24 |
| 2 BCD1     | Sink Base          | Choose Spec | UV     | U    | U    | --     | y        | 0 S   | 30   | 34 | 1/2 | 24 |
| 3 BCD3     | Base 3 Drawer      | Hard Maple  | UV     | U    | U    | LR     | N        | 0 S   | 18   | 34 | 1/2 | 24 |
| 4 BCCUSTOM | Base 3 Drawer      | Hard Maple  | UV     | U    | U    | --     | N        | 0 C J | 18   | 34 | 1/2 | 24 |
| 5 BC S2    | Base Cabinet No Dr | Hard Maple  | UV     | U    | U    | --     | N        | 2 S J | 18   | 34 | 1/2 | 24 |
| 6 T485 S6  | Pantry             | Choose Spec | UV     | F    | F    | --     | N        | 6 S   | 18   | 90 |     | 24 |
| 7 UC S2    | Top Cabinet        | Cherry      | UV     | F    | F    | --     | N        | 2 S   | 18   | 36 |     | 12 |
| 8 UC S1    | Top Cabinet        | Cherry      | UV     | U    | U    | --     | N        | 1 S   | 30   | 18 |     | 12 |
| 9 UC S2    | Top Cabinet        | Cherry      | UV     | F    | U    | --     | N        | 2 S   | 18   | 36 |     | 12 |
| 10 UC S2   | Top Cabinet        | Cherry      | Cherry | U    | U    | --     | N        | 2 S   | 36   | 36 |     | 12 |
| 11 BCD3    | Wine Rack XXX      | Walnut      | UV     | U    | U    | --     | N        | 0 X   | 30   | 12 |     | 12 |

Below the table is a key for the report symbols:

```

--- KEY ---
Int = Interior
Ext = Exterior
L = Left
R = Right
F = Finished
U = Unfinished
#Sh = Number of Shelves
C = Custom Unit
S = Standard Unit
X = Invalid Unit
J = Joined Unit
    
```

At first glance, the report looks quite busy, but will provide you all the critical information you will need to know about ordering your Cabinotch boxes. The easiest thing to do is print the report and close the window so you can look at your design while reviewing the report following the unit numbers.

The report is pretty straight forward and has a key at the bottom of the page to aid in its understanding. Below is a brief description of each column and what to expect:

- Unit Number-this is the unit number of the item in your design
- Code-This is a code that enables us to know what it is we are manufacturing.
- Description- just a simple description of the unit
- Species-this is the species that has been selected for the unit. This species selection will impact frame construction, finished sides and raw interiors if selected.
- Int – This column will indicate if it is a UV interior or a raw interior by showing the species of the raw interior.
- ExtL & ExtR – This columns will indicate if you have selected a finished or unfinished left or right end for your Cabinotch box
- $\frac{3}{4}$ " Scribes left and right – This column will indicate if you have chosen a  $\frac{3}{4}$ " scribe for a  $1\frac{1}{2}$ " wide stile. We only have this option for  $1\frac{1}{2}$ " stiles. When an "N" shows in this column, it means that the standard scribe depth is being used ( $\frac{1}{4}$ " for  $1\frac{1}{2}$ " stiles,  $2\frac{1}{4}$ " for 3", and  $3\frac{3}{4}$ " for  $5\frac{1}{2}$ " stiles)
- $\frac{3}{4}$ " sides – this will show yes if you have selected your box to be built with  $\frac{3}{4}$ " unfinished sides. This selection is not to be confused with  $\frac{3}{4}$ " finished sides as they are a separate option.
- # of Shelves – This option will show you the number of shelves you have selected for each of your units
- Type – This will tell you and us if the unit is a Standard (S), Custom(C) or Invalid (X) unit. This is very important information as it will tell you what we can build or not build according to the drawing. Cabinotch can build all Standard and Custom units, but cannot build the Invalid units, not will we quote the Invalid units. If you think that we should be able to build an invalid unit, please feel free to contact us. In addition, units that have a "J" beside the type of unit means that they are part of a joined cabinet
- The last 3 columns show the dimensions of the box dimensions. The joined boxes will still show as individual cabinets; which corresponds with the way they are drawn in your design.

It is critical when you have finished a design or have modified a design that you check this report to make sure your design is showing what you would like to quote and order.